



RadioLynx Wireless Start

Datasheet

Introduction

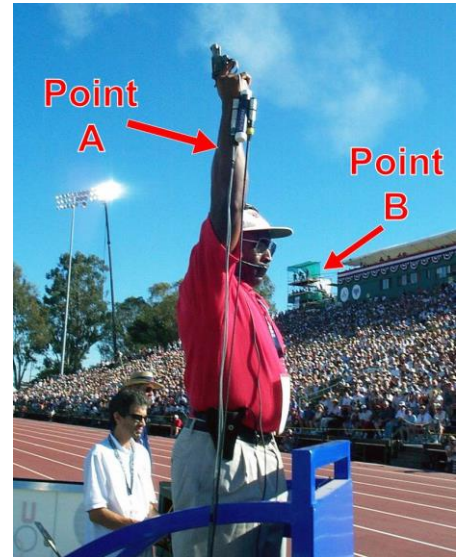
The hard part used to be getting the start cable from Point A to Point B. That is not an issue with the RadioLynx Wireless Start as it eliminates the need for start cables.

RadioLynx is a state-of-the-art system for wireless transmission of timing signals that uses a field-proven technology to ensure accuracy and stability.

RadioLynx gives you total freedom and unprecedented security. When the Starter has true mobility and there are no worries about 'spiked' cables, you will see the true benefits of RadioLynx.

Contact Sales for more information:

US Domestic Sales domsales@finishlynx.com
International Sales intlsales@finishlynx.com



Simple Design

The two-component hardware setup consists of a Transmitter and a Receiver. These units are each about the size of a deck of playing cards but you won't be gambling on anything when you add this functionality to your Fully Automatic Timing system. The RadioLynx software plug-in, which can be found on our website, completes the system.

Secure and Powerful

With a range up to 2 kilometers (in good conditions) from the standard version, and an extended range configuration which will increase the transmission range, the system is powerful enough for every situation.

Complementing the extensive range of the units is the time-stamp technology that copes effortlessly with jammed or interrupted transmission. Every signal is sent multiple times and can be re-sent minutes, or even hours, later, ensuring that your critical data always gets through.

Specifications

Weight	110g
Dimensions	110 x 50 x 27mm (h x w x d)
Transmission Mode	Digital FSK transmission: (127 selectable channels)
Impulse Transmission Accuracy	±0.4ms
Time Base	Digitally compensated 32768Hz quartz Real Time Clock ·4MHz ± 10ppm between - 20° and +70°C
Precision	±0.425 s/day for external temperatures between -20° and +70°C
Operating Temperature	-20°C/+70°C
Power Supply	Internal NiMh batteries, rechargeable
Battery Life	About 2,000 events
Onboard Microprocessor	C-MOS 8 bit microprocessor








RadioLynx Components



RadioLynx is an extremely reliable and particularly popular upgrade to a FinishLynx system. Being able to correctly identify the components can help when troubleshooting potential issues or ordering replacement or spare parts. Head to www.finishlynx.com/news and read our blog post [Diagnose Your RadioLynx Issues with a Paperclip](#) to test your RadioLynx if you run into an issue. Going through these steps will help Lynx tech support understand what's going on when calling in about the issue.

RadioLynx parts can be broken down into two categories: **Transmitter** or **Receiver**. The Transmitter comes with an Antenna, Charger, and Clip Kit. The Receiver will come with an Antenna. Antennae can be purchased separately.

Transmitter Components

		
MG-ENC004 EncRadio Transmitter with Antenna	3L300R Normally Open Start Sensor for RadioLynx	8L-Clip Belt Clip Kit for RadioLynx Transmitter
		
MG-ENC004_Input Transmitter Input Cable	8L-PS 12V Power Supply	

Receiver Components

	
MG-DEC004 DecRadio Receiver with Antenna	MG-DEC004_Serial Receiver Serial Cable