



COMPETITION FIELD PACKAGE

The FieldLynx software at the heart of the Competition Package enables the complete management of all your field events, including athlete check-in, scoring, results, and meet management integration. The package includes three Windows-based netbook computers and all the software you need to administer three events simultaneously. This modular package can also be upgraded at any time to include a wide range of add-ons like displays, wind gauges, and electronic distance measurement (EDM).

Built-in compatibility with existing wired Ethernet networks enables a simple and robust connection to your existing infrastructure for downloading athlete information and uploading results. When site conditions allow, the package also includes the AirLynx infrastructure, which enables wireless communication between the FieldLynx computers and wind gauges, scoreboards, and external meet/scoring databases.

EVERYTHING YOU NEED

3 Windows-Based Netbook Computers, Wireless Connectivity, Amplified Antenna, & All Necessary Cables and Software.



COMPONENTS

- **3 Windows Netbook Computers** (with USB port & wired/wireless Ethernet connectivity)
- **3 seats of FieldLynx** Field Event Administration Software
- **1 seat of ClerkLynx** Remote Clerking Software
- **AirLynx Wireless 802.11 Gateway and Amplified Antenna Kit**
- **NetExchange** Field Event Server License
- **LynxPad Meet Management Software** Available in multiple languages
- **Access to Complete Technical Support**

FEATURES

- In addition to the standard wired connectivity, the package includes AirLynx for stadium-wide wireless communication. This makes it easy to expand the system later and add features like LED displays or wind gauges.
- **FieldLynx** Software suitable for administering all Field Events: Horizontal Jumps, Vertical Jumps, and all Throwing events.
- Fully configurable event setup: rule books, advancement, bar heights, attempts, etc.
- Software upgradeable to allow direct data transfer to wide range of displays, wind gauges and lasers.

MOBILE MEET MANAGEMENT WITH NETBOOK COMPUTERS

The **Competition Field Event Package** includes two software programs that run on Windows:

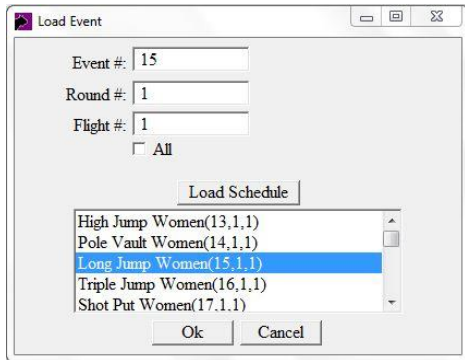
- **FieldLynx** – Field Event Management Software. The world’s most convenient, most portable, most flexible system for administering field events, from athlete check-in to results distribution.
- **ClerkLynx** – A simple and effective system for forming heats in the stadium at a location other than the main LynxPad event management site. ClerkLynx downloads athlete names, allows the operator to combine them into heats, and then uploads the new start lists back to the FinishLynx photo-finish system.

THE FIELDLYNX SOFTWARE IS FAST & FLEXIBLE

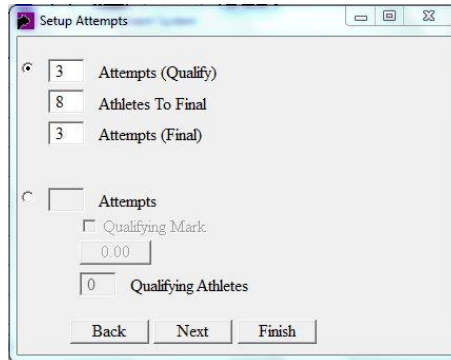
With FieldLynx software on the handheld computer, you can connect wirelessly to the computer running LynxPad Meet Management software to obtain a list of competitors in an event.

The handheld unit will then allow you to manage the event: keep track of the order of competition, enter results, score the event, and then upload the results back to the main computer - all without entering any information other than an athlete's marks.

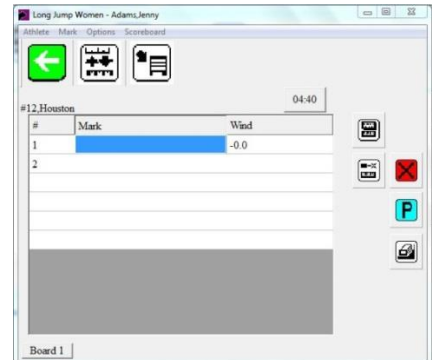
Remote Access to Event Database



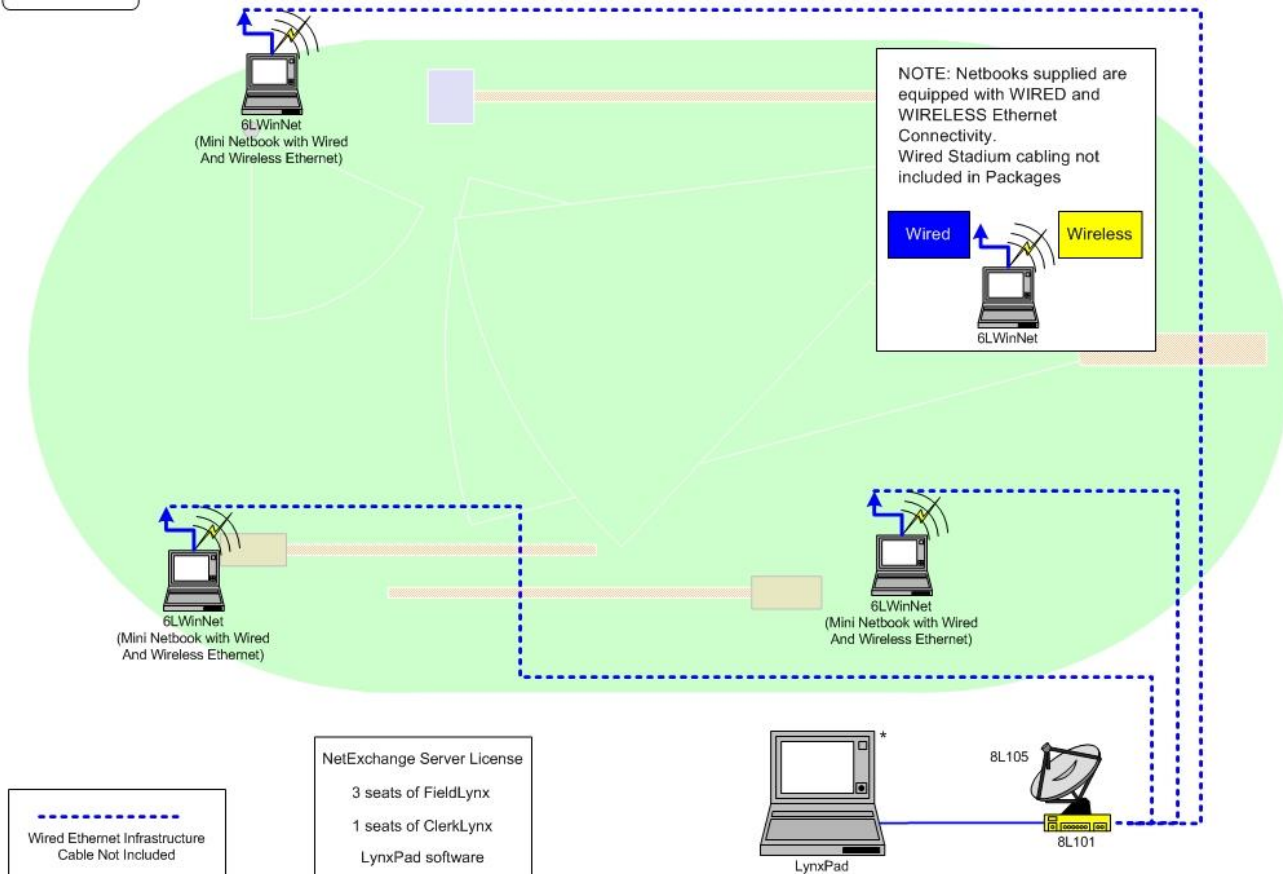
Customizable Event Setup



Easy and Intuitive Mark Entry



Field – Competition



*Meet Management computer not included